

Hand nozzles - Selectable flow rate



The selectable flow rate nozzles of 750 lpm represent the ideal compromise between the 500 lpm and 1000 lpm range of nozzles. They offer power, lightness and manoeuvrability.

The nozzles are available in two versions: "ECO" and "Premium".

The calibrated flow rates are easily selectable through an indexed ring. The maximum flow rate is indicated by a raised lug. The stream patterns are changed by rotating the head ring with tactile markings (straight jet, flashover, wide angle spray).

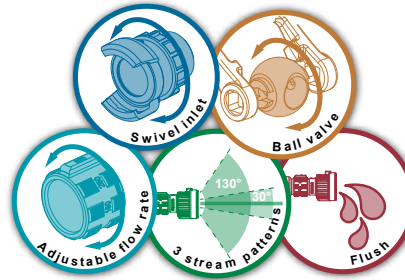
This family of nozzles comes with three possibilities of tips: Debi (teeth cut in aluminium alloy), Magi (rubber moulded teeth) and Turbo (spinning teeth).

Maximum working pressure: PN16
Shutoff: ball valve
Opening: by operating handle
Flush position: YES
Material: aluminium alloy
Surface treatment: hard anodisation
Body type: cut into bars
Pistol grip: one

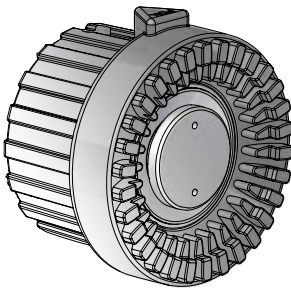
Options: low expansion foam attachment, medium expansion foam attachment.

Bumper guard colours:

Conform to norm EN 15182-2



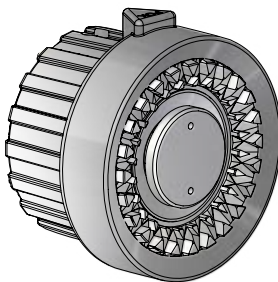
Magikador 750



Inlet	Flow rate	Working pressure	Dimensions (mm)	Weight (kg)	Ref.
DSP DN65	350-500-600-750 lpm	6 bar	442 x 272 x 126	4,48	28664
DSP DN65	350-500-600-750 lpm	6 bar	402 x 272 x 126	4,07	37148*
2.5" NST-NH female	95-125-150-200 GPM	100 PSI	442 x 272 x 126	4,48	28671
DSP DN65	250-500-750 lpm	6 bar	442 x 272 x 126	4,48	25053
2.5" NST-NH female	125-180 GPM	100 PSI	442 x 272 x 126	4,48	28667

*New design

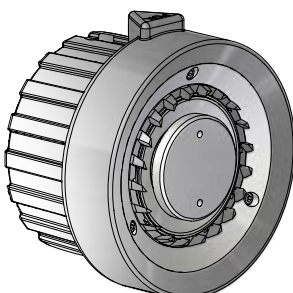
Debikador 750



Inlet	Flow rate	Working pressure	Dimensions (mm)	Weight (kg)	Ref.
DSP DN65	350-500-600-750 lpm	6 bar	442 x 272 x 126	4,48	18490
DSP DN65	350-500-600-750 lpm	6 bar	397 x 272 x 127	4,07	37142*
2.5" NST-NH female	95-125-150-200 GPM	100 PSI	442 x 272 x 126	4,48	18494
DSP DN65	250-500-750 lpm	6 bar	442 x 272 x 126	4,48	22825
2.5" NST-NH female	125-180 GPM	100 PSI	442 x 272 x 126	4,48	28669

*New design

Turbokador 750



Inlet	Flow rate	Working pressure	Dimensions (mm)	Weight (kg)	Ref.
DSP DN40	350-500-600-750 lpm	6 bar			09190
DSP DN65	350-500-600-750 lpm	6 bar			09191
DSP DN65	350-500-600-750 lpm	6 bar	397 x 127 x 272	4,07	37154*
Storz C/52	350-500-600-750 lpm	6 bar			09193
Instantaneous 2.5" male	350-500-600-750 lpm	6 bar	327 x 272 x 126	4,02	14980

*New design